




**City of Winchester  
Fire & Rescue Department  
GENERAL ORDER**



<b>Section:</b> General Order	<b>GO:</b> 11003
<b>Subject:</b> Apple Blossom Festival Operations	<b>Executed:</b> April 20, 2011 <b>Revised:</b> April 25, 2011
<b>Approved:</b>  Scott Cullers, Fire Chief	

## PURPOSE

To define the operational objectives and incident action plan for the Winchester Fire and Rescue Department and assisting agencies during the Shenandoah Apple Blossom Festival.

## OPERATIONAL PERIOD

The operational period of this General Order will be from April 15, 2011 through May 1, 2011.

## CHANGES FOR 2011

The following changes are being implemented to enhance the operations of the Winchester Fire and Rescue Department and outside agencies during this time of increased population to the City of Winchester. With everyone's help we can make this an enjoyable and safe event for all to remember. Please exercise extra care and patience when assisting our visitors.

- Incident action plan implementation according to National Incident Management System (NIMS) and ICS forms.
- Dispatch personnel and operations relocated to the Emergency Medical Aid Station. (EMAS)
- Implementation of task forces during the Firefighter's parade on Friday.
- Identification tracking system placed in service for all Fire and Rescue participants.
- 2300 Valley Ave. will be used as the dispatch and reporting address for the carnival.
- A revised schedule of event standby coverage has been implemented to provide more manpower for emergency incidents.
- A quick reference chart has been added to list standby event dates, times and locations.

## UNIFIED COMMAND/INCIDENT ACTION PLAN

An incident action plan has been developed according to the NIMS structure. Copies of this plan will be with department command officers for viewing and implementation. A unified command structure with Winchester Police Department, Public Works, Apple Blossom Officials and the Virginia Defense Force will be setup and located in the Timbrook Public Safety Center during the parades on Friday and Saturday. (see appendix A – Command Organization).

### 1. EOC

- The radio designator for this position shall be **EOC**. The EOC Officer will facilitate all activities in the “Red Zone” and “Task Force” operations for Friday and Saturday when the unified command is in operation. The EOC Officer will ensure the Virginia EOC, Virginia Department of Emergency Management, Frederick County Fire and Rescue and the Winchester Emergency Manager are aware that the Region 2 Hazardous Materials Team will be out of service from Thursday morning until Monday after the Apple Blossom Event. In turn, Command will place this unit/team back in service on Monday after the event.

### 2. OPERATIONS

- The radio designator for this position shall be **OPERATIONS**. A fire department officer will be assigned to perform as the “Red Zone” Operations. Operational responsibilities will include EMAS, the “Red Zone” Task Force all incidents/activity that will require a fire and rescue response. Units that are requested to respond into the “Red Zone” for additional support will fall under the command of this position. The Operations Officer will report directly to the EOC Officer.

### 3. EMS BRANCH

- The radio designator for this position shall be **EMS BRANCH**. A fire department officer will be assigned to the EMAS. The EMS Branch Director will insure that sufficient resources are available to treat and transport patients from points along the defined “Red Zone” to the EMAS. The EMS Branch Director will report directly to the Operations Officer.

### 4. BATTALION 6

- The radio designator for this position shall be **BATTALION 6**. A fire department officer will be assigned to the Task Forces. The Battalion Officer will manage all “Task Force” resources and incidents outside of the “Red Zone”. The Battalion officer will report directly to the EOC Officer unless requested to operate in the “Red Zone” then they will report to the Operations Officer.

### 5. PLANNING

- This position will be managed by the EOC Officer.

### 6. FINANCE

- This position will be managed by the EOC Officer.

## 7. LOGISTICS

- The radio designator for this position shall be **LOGISTICS**. A fire department officer will be assigned to manage all “Red Zone” logistics. Logistics will be responsible for securing all requests for equipment and personnel as determined by EOC, Operations and the EMS Branch Director. The Logistics Officer will report to the EOC Officer or Operations depending on the request.

## 8. INSPECTIONS

- The radio designator for this position shall be **FM 6-1**. A fire department officer will be assigned to this position. FM 6-1 will be responsible for the inspections of all event locations and vendors. FM 6-1 will report directly to the EOC Officer.

## IDENTIFICATION TRACKING

All personnel that are assisting in the fire and rescue command structure shall be identifiable at all times while providing EMS and fire support. This will be accomplished by individuals displaying an ID that is issued as follows:

- Winchester Fire and Rescue Issued ID
- Outside Agency/Jurisdiction ID
- Temporary issued event ID from the EMAS

ID's shall be displayed on individuals at all times so that they are easily seen by the public. Individuals that do not display this ID will not be considered part of the public safety team and shall be reported to a command officer. Accountability checks will be conducted periodically to ensure personnel safety.

## EMERGENCY MEDICAL AID STATION (EMAS)

The **Emergency Medical Aid Station (EMAS)** will be established to facilitate patient care and tracking during festival events. The EMAS will consist of medical personnel responsible for patient care and support positions as designated. The radio designator for the aid station will be **EMAS**. ECC personnel shall make an announcement when the EMAS goes into operation and that GO-1103 is now operational. The EMAS will be in operation as listed below:

<b>Date &amp; Location</b>	<b>Event</b>	<b>Operational Period</b>
<b>Friday</b> <b>April 29, 2011</b> Intersection of Gerrard St. and Cameron St. (The Final Yard)	Kids' Mile Race and Firefighter's Parade	Setup: 1400 hours Operational: 1500 hours until 1 hour after the parade's conclusion
<b>Saturday</b> <b>April 30, 2011</b> Intersection of Gerrard St. and Cameron St. (The Final Yard)	Grand Feature Parade	Setup: 0900 hours Operational: 1230 hours until 1 hour after the parade's conclusion

In the event of patient overloading or severe weather, South End Fire station will be utilized as a backup location for the EMAS. The demobilization of units will be managed by Logistics and Operations after the end of each event that the EMAS is in operations. Units will be contacted by the EMAS and placed in service in an orderly fashion to ensure that calls-for-service are reduced to an acceptable level for normal operation by the WFRD. All units demobilizing shall report to the EMAS to return ID's, portables, documentation.

## RED ZONE OPERATIONS

The “Red Zone” is defined as the immediate area of the parade activity (see appendix B - Red Zone Map). The EMAS will be assigned as the collection point for all heat related patients. The EMS Branch will be responsible for the assignment of units in this area and the operations for all EMS related incidents. All units operating in this area will be dispatched and shall communicate through EMAS. There will be onsite dispatch personnel that receive information from “Red Zone” personnel and/or ECC and will dispatch accordingly. The dispatchers, as part of the communications unit, will report directly to the Logistics Officer and will assign incident numbers and track scene times for all incidents during the EMAS operations.

Patients along the parade route requiring medical treatment will be transported to medical facilities as indicated below:

### Patient Criteria

Priority	Destination	Notes
1	Winchester Medical Center	Regardless of contact point
2	Winchester Medical Center	Other than heat related
2 and 3	EMAS	Heat related
3	WMC	-

There are three types of EMS support units that will be staged along the parade route. Transport units, gators and bike teams. All units assigned to the parade route shall notify EMAS when in position and provide their unit's designation, capability (ALS or BLS), location and manpower.

1. **Transport units** – will typically be staged on the outside of the parade route so transport away from the “Red Zone” is accomplished if patients need to be transported to the hospital. Transport units shall communicate with the EMAS when they are transporting to the hospital and when they are back in position.
2. **Gators** - will be utilized during the parades for transport of EMS patients in the “Red Zone.” Prior to the parades, these units shall be mobile to patrol around the “Red Zone”. After the parade has started, these units shall be positioned as directed by EMS Branch Officer. Gators will be responsible for initial response in their assigned areas. They may:
  - Initiate care and summon a transport unit to their location
  - Transport the patient to a location to meet a transport unit

- Transport the patient to the EMAS as long as such can be accomplished safely and follows the patient criteria above.

3. **Bike Teams** – will operate in teams of two or three. These teams will be given assigned coverage areas to patrol prior to the parade. After the parade is underway the teams will be positioned at intervals throughout the parade route and dispatched as requested by the EMAS.

Transport units shall avoid making access to the parade route if at all possible and should only do so as a last resort. If access is necessary units shall enter from the side street closest to the incident and shall not respond via the parade route. After packaging the patient the transport unit will exit the parade route via the closest intersection and transport the patient by a non-parade street. The use of sirens shall be avoided if at all possible.

A City Transit Bus will be located at the EMAS to assist with mass cooling or transportation as designated by the OMD at the aid station.

### TASK FORCE OPERATIONS

Four “Task Force” groups will become active when the EMAS is placed into operations. The task forces will be responsible for all incident operations outside of the Red Zone except for task force “Red Zone”. The Winchester ECC will determine the appropriate units to dispatch based on incident location, incident type and Department SOP. Incidents types requiring a three or more engine response will be given the next closest task force to fulfill the assignment. The Battalion Officer will be responsible for the management of all task force operations outside of the “Red Zone” (see appendix C – Task Force Assignments)

*Task Force assignments may vary based on manpower availability*

Task Force	Location	Apparatus	Area of Responsibility
1	Friendship Fire Company	(2) Pumpers (1) Aerial (Saturday) (1) Medic unit	These units will respond to the north and east sections of the City as dispatched.
4	Shawnee Fire Company	(2) Pumpers (1) Aerial (1) Medic unit	These units will respond to the south and west sections of the City as dispatched.
5	Amherst St. & Washington St.	(1) Pumper (1) Rescue Eng. (2) Medic Units	These units will respond to the west section of the City and assist along the parade route of the Red Zone
Red Zone	South End Fire Company	(1) Engine 5 (1) Attack 15 (1) Aerial (Friday)	These units will respond to (Fire) incidents only in the Red Zone

1. **Task Force 1** - will respond to incidents in the north and east portions of the city outside of the “Red Zone”. In addition, they may be dispatched to assist on structure related incidents in the “Red Zone”. The responding task forces into the “Red Zone” are to stage in a flexible, safe, and strategic location on the perimeter

of the “Red Zone” as directed by the Operations Officer. Only if requested; will the task force respond to the incident location. Rescue Engine 15 (Friday) and Truck 2 (Saturday) will provide squad response in the north and east areas.

2. **Task Force 4** – will respond to the south and west portions of the city outside of the “Red Zone” and will assist Task Force 5 for incidents in the north western portion of the City. Rescue Engine 15 (Friday) and Truck 2 (Saturday) will provide squad response in the south areas.
3. **Task Force 5** – will respond to the north western portion of the City outside of the “Red Zone” by a pumper and medic unit from station 5 that will be staged at Amherst and Washington Streets. Engine Co. 15 will provide mutual aid in this area and be staged at Boscawen and Washington St. The call down for additional resources will be from Task Force 4. Rescue Engine 15 will provide squad response in the west area.
4. **Red Zone** – a pumper from station 5 and attack pumper from station 15 will be staged at South End Fire Company and Truck 2 will be located at station 2 along Boscawen St. (facing west) on **Friday only**. These units will be utilized for fire suppression only in the defined “Red Zone” area. The call down for additional resources will be from Task Force 1. A Gator type vehicle (**Fire 600**) will be equipped with extinguishers to provide additional fire support within the Red Zone. Truck 2 will provide squad response in the “Red Zone”.
5. If at anytime task force 1 or 4 are completely depleted, the other remaining task force shall relocate all units to a centralized location for a more advantageous response. This location shall be the parking lot of K-mart, 1675 S. Pleasant Valley Road.
6. Fill-ins requests and mutual aid response will follow normal department SOP. Additional units needed inside/outside the “Red Zone” will be coordinated through the Operations Officer to Command.
7. It is imperative that units only respond when dispatched or specifically requested.

## HELICOPTER LANDING ZONES

Four primary helicopter landing zones have been established in the event of an incident requiring this service. Battalion 6 or a designee from the first due station will visually check each LZ daily to ensure availability of the site and will relay this information to Command. The coordinates for each site have been plotted on a map for responder use. The EOC Officer shall coordinate the landing zone operations through Battalion 6 when necessary. (see [Appendix D – Helicopter Landing Zones](#))

## RADIO COMMUNICATIONS

A portable radio cache will be made available to assist responders that are in need of communication devices. The Operations Officer and EMS Branch Director will manage the disbursement of these devices. A tracking log will be maintained to ensure all

devices are accounted for when issuing and demobilizing. All deficiencies and/or problems shall be reported at this time.

The following communication assignment will be utilized when the EMAS is placed into operation.

1. **Task Force 1, 4, 5**

- All task force incidents will be dispatched via **WFRD Channel 1 (154.370)** with normal dispatching procedure through ECC. **WFRD Channel 2 (154.415)** will be assigned as the tactical frequency for working incidents. The exception will be: Task Force apparatus requested to operate in the “Red Zone” will communicate through the channels assigned to the EMAS.

2. **EMAS/Task Force “Red Zone”**

- The Emergency Medical Aid Station (EMAS) and task force “Red Zone” will operate on Frederick County Fire and Rescue’s event channels and Winchester Fire and Rescue’s tactical channel as follows:

Channel	Frederick County Radios	Winchester Radios/Cache	Use
FCFR Event Repeat	9EvtRpt	Channel 12	Primary
FCFR Event Talk Around	10EvtTA	Channel 13	Primary
WFRD	Channel 13	Channel 3	Tactical

## INCIDENT REPORTING

Documentation of all emergency/standby incidents is a very important process with our operations. There are several types of incident reports that will be necessary to complete:

1. **Standby Events** - will require an EMS standby report in the Department’s incident reporting software. If emergency incidents are encountered during these events then follow the criteria for obtaining incident numbers from ECC or EMS Operations and prepare the appropriate incident report. Please use “381, Rescue or EMS Standby” for the incident type and “92, Standby” for actions taken when generating your standby report.
2. **EMS/Fire Reports** (Task Force/normal operations) - All patient care and fire reports shall follow department SOP for incident reporting. WFRD assistance may be required for mutual aid units assigned to a task force.
3. **EMS Reports** (Red Zone) - All patient care reports shall be completed by providers as per their department procedures. Onsite ECC personnel will generate a city incident number for all incidents. A NO patient report will be generated in the Department reporting software for all mutual aid patient contact.
4. **EMS Reports** (EMAS) - Patients being treated at the EMAS will be documented through the utilization of a Winchester Fire and Rescue Pre-hospital Quick Report.

- a. Upon arrival of a patient at the EMAS the on-site ECC personnel dispatcher person will:
  - i. Generate an incident number and times through CAD.
  - ii. Initiate a Quick Report form by inserting the incident number and time of notification or initial patient contact in the appropriate space.
  - iii. Pass the form to the attendant in charge of the patient.
  - iv. The patient form will now stay with the patient until the patient is either transferred to the hospital or released from the EMAS by a physician. All forms shall be given to the EMS Branch Officer in accordance with HIPPA requirements.

### **SPRINT TENT (1775 North Sector Court)**

A tent will be erected at the School of Health Professions behind the Winchester Medical Center. This facility will be utilized by the Festival for various events. The department will **NOT** provide standby coverage for these events but may be summoned in the event of an emergency. Responding apparatus should be alert to heavy traffic in this area. **The emergency access lane to the School of Health Professions, from the junction of Linden Drive and Caroline Streets will be made available for EMERGENCY ACCESS ONLY! This will be useful for response to the tent location in the event of traffic congestion. Battalion 6 shall verify access through this location prior each scheduled event. (see Appendix E – Sprint Tent)**

### **FIREWORKS (425 Handley Blvd.)**

Fireworks will be displayed after the Firefighter parade on Friday. The Operations Officer, FM 6-1, a pumper and medic from station 5, a gator unit, Fire 600 and the brush truck from station 18 will provide coverage during this event. The Operations Officer will direct apparatus staging areas prior to the vent. Units should be in place by 2100 hours. All units will operate on WFRD channel 3 during the event

### **CARNIVAL (2300 Valley Ave.)**

The Carnival will be located on the asphalt lot behind Ward Plaza Shopping Center, to the east of Valley Avenue. (see Appendix F – Carnival Layout) The hydrant on the east side of Ward Plaza (rear of stores) will be used for the domestic water supply for the concessions. The hydrant on the south side of Ward Plaza is accessible via the fire lane through the concession area. Both are available for fire water supply. Personnel shall be mindful of the need to shut each hydrant off before removing caps for installation of fire hoses. **Battalion 6 shall verify access through this location prior to the opening of each day and advise all WFRD stations and command officers.** Emergency incidents within the carnival area will be dispatched through ECC per departmental SOP.

### **MIDWAY CONCESSIONS (downtown walking mall and Piccadilly St.)**

Concessions will be located at various points throughout the City with the largest concentration being in the central downtown business district.

- Loudoun Street Mall from Cork Street to Fairfax Lane

- Piccadilly Street from Cameron to Braddock Street
- Boscawen Street from Cameron to Braddock Street

The above listed areas will be closed to through traffic starting at 4:30 p.m. on Thursday.

### **WEEKEND IN THE PARK (1001 E. Cork St.)**

Jim Barnett Park will be the location of Weekend in the Park. Traffic, both vehicular and pedestrian, will be extremely heavy in this area. A scaled down version of the EMAS will be located at the concession area of Preston field on Sunday. Units operating in this area are to communicate directly through ECC as per department SOP. (see [Appendix G – Weekend in the Park](#))

### **FIRE HYDRANTS**

Fire hydrants will be utilized throughout the City during the Festival. These hydrants will be in the **ON** position and must be shut-down prior to connection by the Fire & Rescue Department. (see [Appendix H – Hydrants for locations](#))

### **OTHER INFORMATION**

- A. If safety violations or concerns are noted or reported, personnel should report this information through the operational chain of command.
- B. For responder safety, personnel will utilize a series of signal codes. These signal codes are used to get attention and to summon law enforcement.

**Signal 1** – Responder in immediate danger

**Signal 2** – Responder needs backup/assistance

**Signal 4** – Holding transmission of sensitive information

1. Signal 1 will have the police department respond emergent. No other radio communication will be necessary to validate this. ECC shall dispatch an additional engine, medic and command officer to the incident location. Units shall stage until given the all-clear by the police department.
  2. Signal 2 will be used to have the police respond in a non-emergency mode to assist in a non-threatening situation.
  3. Signal 4 alerts responders that ECC is holding transmission of sensitive information until the responder goes to a secure location (non-emergency) to transmit private/confidential information.
- C. Places of Assembly - various places of assembly will be heavily occupied for special functions. All event locations will be inspected for fire code violations prior to any functions. Should an incident be encountered at any place of assembly, a safe and orderly evacuation of occupants is paramount.
  - D. Pedestrian Traffic will be extremely heavy in all areas of the City. **EXTREME CAUTION** must be utilized when operating apparatus.

- E. Emergency Routing - Monmouth Street and Cork Street have been designated from Kent Street to Stewart Street as emergency routes and are to be kept open at all times. **Response to incidents is to be via a route other than the parade route.**
- F. Department Officers and individual station officers will be on duty each day of the festival should assistance be required. The duty schedule should be consulted to identify the Battalion Officer.
- G. City Yards will be closed during the festival. No fueling will be available at City Yards on Friday, Saturday or Sunday unless it is an emergency. Should emergency fueling be necessary the request should flow through the operational chain of command.
- H. Equipment and apparatus should be made secure if personnel will be relocated due to incidents or other events within the Red Zone. Personnel shall ensure that all portable radios remain on the person and secured at all times. Any missing/stolen equipment should be reported to the Operations Officer immediately.
- I. The Canteen unit from South End Fire Company will be available for use in the event of a prolong incident. Requests for this unit shall be made through EOC Command Officer.

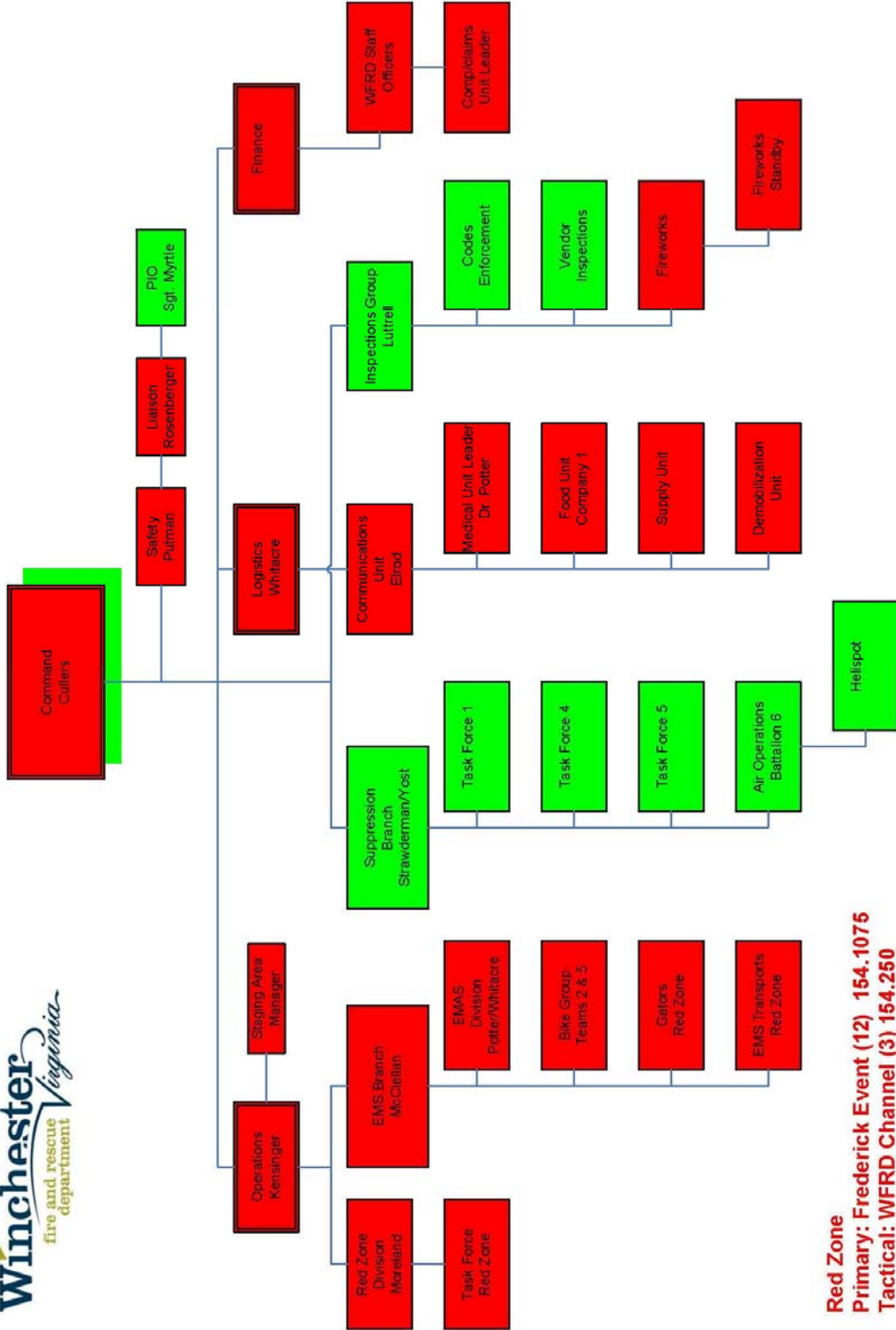
## SCHEDULE OF APPLE BLOSSOM FESTIVAL STANDBY EVENTS

Date	Time	Event	Location	Unit(s)	Description
<b>TUESDAY</b>					
4/26	1700	Carnival	2300 Valley Ave.	As Dispatched	Carnival opens on this date and will operate every day at various times until Sunday, May 1, 2011
<b>THURSDAY</b>					
4/28	0715 – Duration	Breakfast Walk	300 Westminster Canterbury Dr.	Amb. 1 Gator 6-1	Personnel will provide EMS coverage for the Westminster-Canterbury Breakfast Walk. This unit will be out of service for the duration of the event.
4/28	1630 - Duration	Queens Dinner	Lee-Jackson Best Western 711 Millwood Ave.	As Assigned	Personnel will provide EMS coverage for the Queen's Dinner. This unit will be 3 <sup>rd</sup> run for the duration of the event.
4/28	1730	Downtown Midway Setup	Loudoun St. Walking Mall	None	Set-up of the concession stands on the Midway in the downtown area will commence. All personnel are reminded to exercise extreme caution when responding to incidents in this area throughout the festival dates.
<b>FRIDAY</b>					
4/29	1200	Operational Briefing	Friendship Fire Company 627 N. Pleasant Valley Road	All EMS and Fire Personnel	There will be a briefing for all persons helping with EMS and Task Force coverage for the Firefighter Parade.
4/29	1330 – Duration	Coronation of Queen	JHHS 427 Handley Blvd.	Gator 6-1	Personnel will provide EMS coverage for the Coronation of the Queen. Personnel will then relocate to the Kid's Bloomin' Mile to assist.
4/29	1600 – Duration	Kids' Bloomin' Mile	JHHS 427 Handley Blvd.	Gator 6-1, Gator 6-2, Medic 5	Personnel will provide EMS coverage for the Kid's Bloomin' Mile to be run on Handley Boulevard. <b>Gator 6-2 with 2 personnel</b> will be at the start/finish line and <b>Gator 6-1 with 2 personnel to follow the runners. Medic 5 will be staged.</b>

4/29	1600 – Duration	Firefighter Parade	Red Zone	Various	Personnel will provide EMS coverage for the Firefighter parade at various locations as defined in the department IAP. (see attached red zone layout for more information)
4/29	2000 – Duration	Queen's Ball	Shenandoah University 1460 University Dr.	Medic 4	Personnel will provide EMS coverage for the Queen's Ball in the Ferrari room at Shenandoah University through the conclusion of the event. This unit will be out of service during the duration of the event.
4/29	2100 – Duration	Fireworks	JHHS 427 Handley Blvd.	Medic 5 Brush 18 Engine 5 Gator 6-1	Personnel will provide EMS and Fire coverage for the Fireworks display with <b>personnel, transport unit, pumper, gator and brush truck, FM6-1, OPS-6</b>
<b>SATURDAY</b>					
4/30	0730 – Duration	Sports Breakfast	Moose Lodge 215 W. Cork St.	Medic 1	Personnel will provide EMS coverage for the Sports Breakfast at the Moose Lodge through the conclusion of the event. This unit will be out of service for the duration of the event.
4/30	0800 – Duration	10K Race	JHHS 427 Handley Blvd.	Gator 6-1, Gator 6-2, Amb. 4, Amb. 5	<p>Personnel will provide EMS coverage for the 10K Race with <b>Gator 6-1, Gator 6-2, Medic/Ambulance 4, Medic/Ambulance 5</b>. Gator 6-1 will be staged at the 10 K Medical Tent located at the Handley Bowl. Gator 6-2 will be assigned prior to the race. <b>Ambulance 4</b> will be staged along Valley Avenue, at Lambden Avenue. Ambulance 5 will be staged along Valley Avenue at Bond St. These units will be in place from <b>8:00 a.m.</b> until the conclusion of the event. All units shall contact ECC when in position. These units will be out of service during the duration of the event.</p> <p>Due to the addition of chip-timers for contestants and the congestion caused by this event, alternate routes</p>

					shall be used for response to any incidents in this area when at all possible. This is especially true for the areas of Jubal Early Drive between Loudoun Street and Valley Avenue, for Valley Avenue between Jubal Early Drive and Gerrard Street, and for the Finish Line area on Handley Boulevard. If apparatus is unable to avoid these areas, special care must be taken to avoid driving on the mats that cover the chip-timers. The chip-timers and mats will allow traffic on at least one lane of the street.
4/30	1100 – 1200	Volunteer Briefing/Luncheon	Friendship Fire Company 627 N. Pleasant Valley Road	All EMS and Fire Personnel	There will be a luncheon for all persons helping with EMS and Task Force coverage for the Grand Feature Parade. The luncheon will be held at Friendship Fire Co.
4/30	1230 - Duration	Grand Feature Parade	Red Zone	Various	ALL units should be in place by 12:30 p.m. and contact the EMAS when in location. The EMAS will dispatch <b>ALL</b> calls along the parade route. (see attached "Red Zone" layout for more information)
<b>SUNDAY</b>					
5/1	0930 – Duration	Weekend in the Park	1001 E. Cork St.	Gator 6-1 & Amb. 1	<p>EMS coverage for Sunday in the Park will be provided with a scaled-down Emergency Medical Aid Station (EMAS). The Battalion Officer will be responsible for ensuring that the EMAS is manned and equipped and that ECC are advised of the status of the manpower and apparatus involved. These units will be out of service during the duration of the event.</p> <p>The EMAS will be located in the area of the Preston Field concession stand in Jim Barnett Park. (see attached park layout for more information)</p>

# Appendix A – COMMAND ORGANIZATION



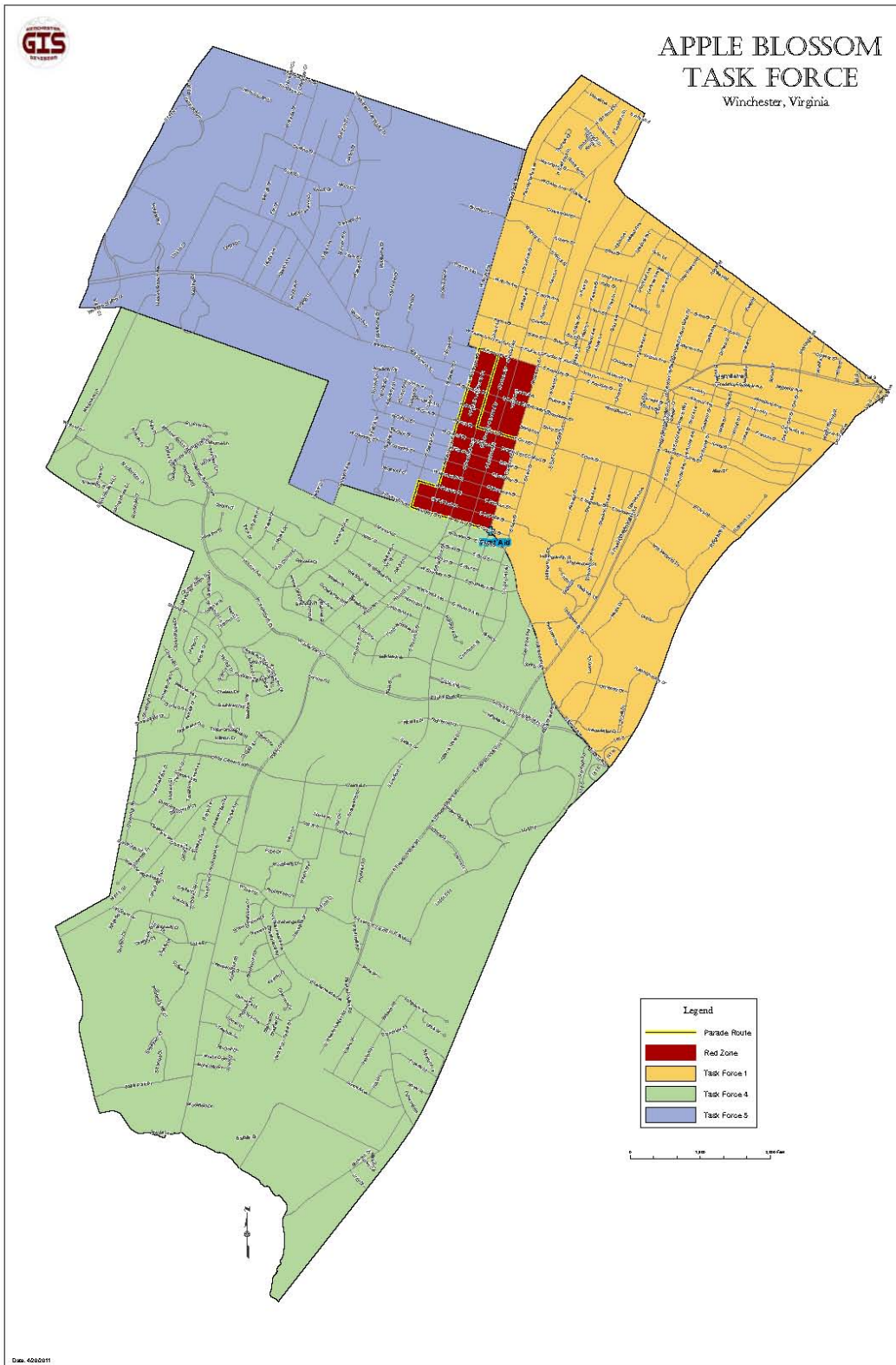
**Red Zone**  
**Primary: Frederick Event (12) 154.1075**  
**Tactical: WFRD Channel (3) 154.250**

**Task Force**  
**Primary: WFRD Channel (1) 154.370**  
**Tactical: WFRD Channel (2) 154.415**

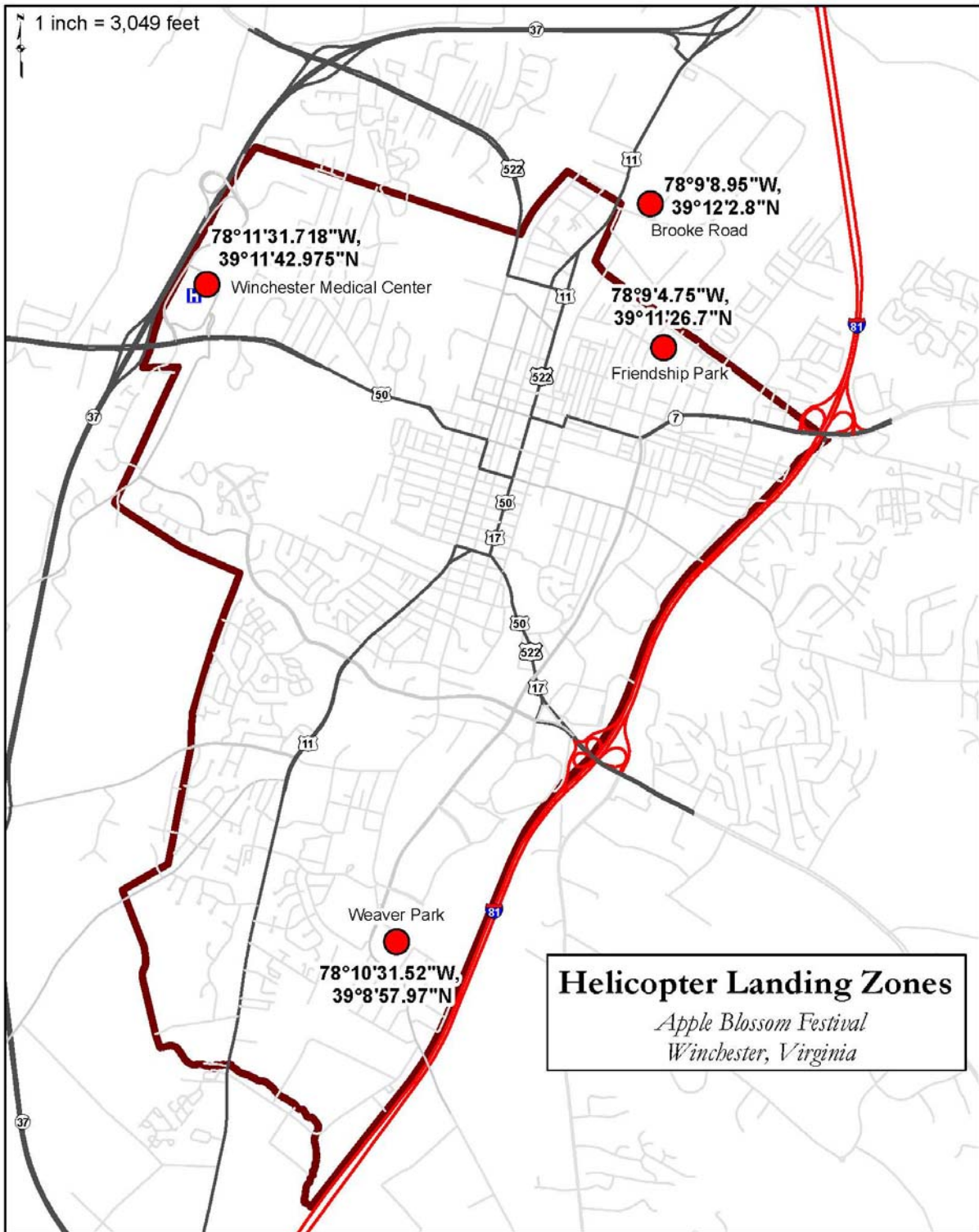
Incident Name: Apple Blossom Mall  
 Operational Period: April 29-30, 2011



# Appendix C – TASK FORCE ASSIGNMENTS



# Appendix D – HELICOPTER LANDING ZONES



# Appendix E – SPRINT TENT





# Appendix G - WEEKEND IN THE PARK

